

PRÁCTICAS

Q

U

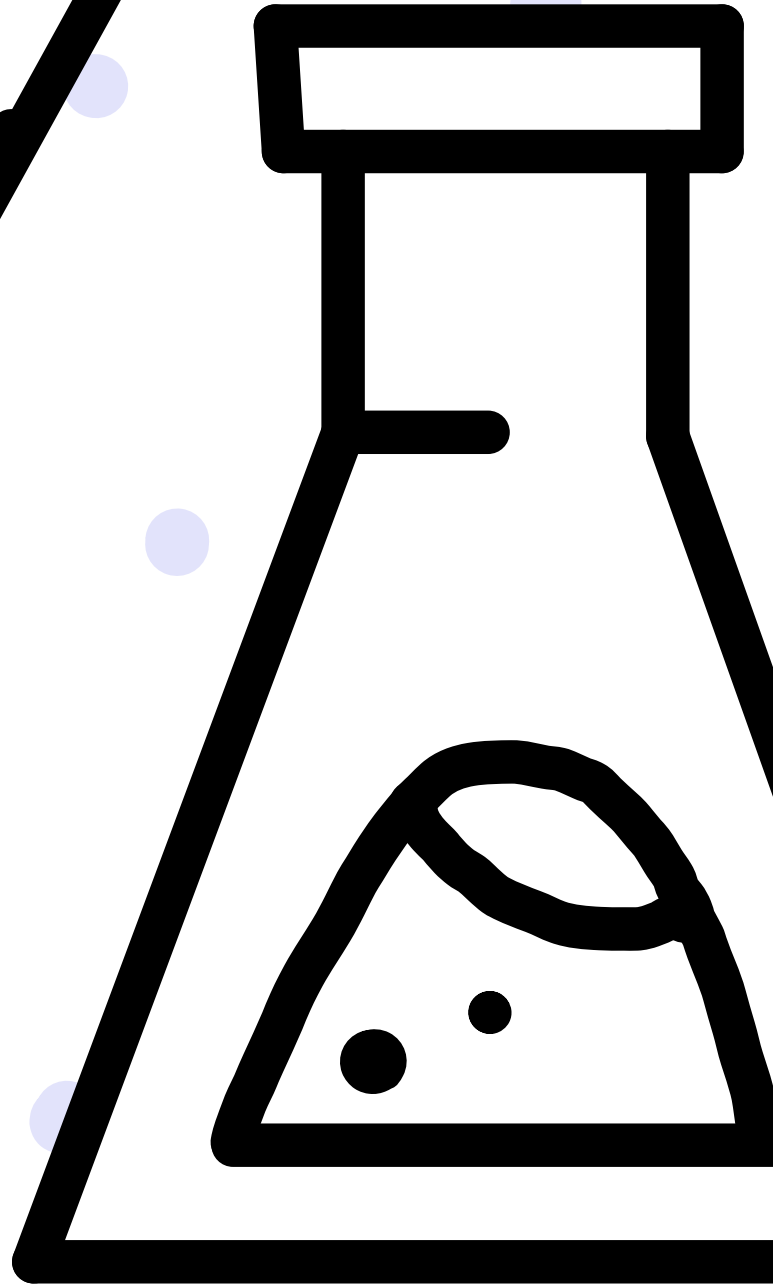
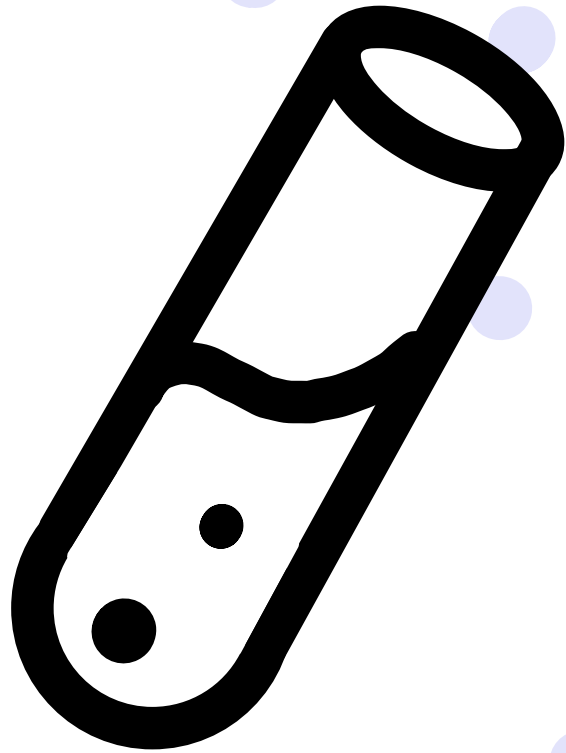
Í

M

I

C

A



PRÁCTICAS

B

I

O

L

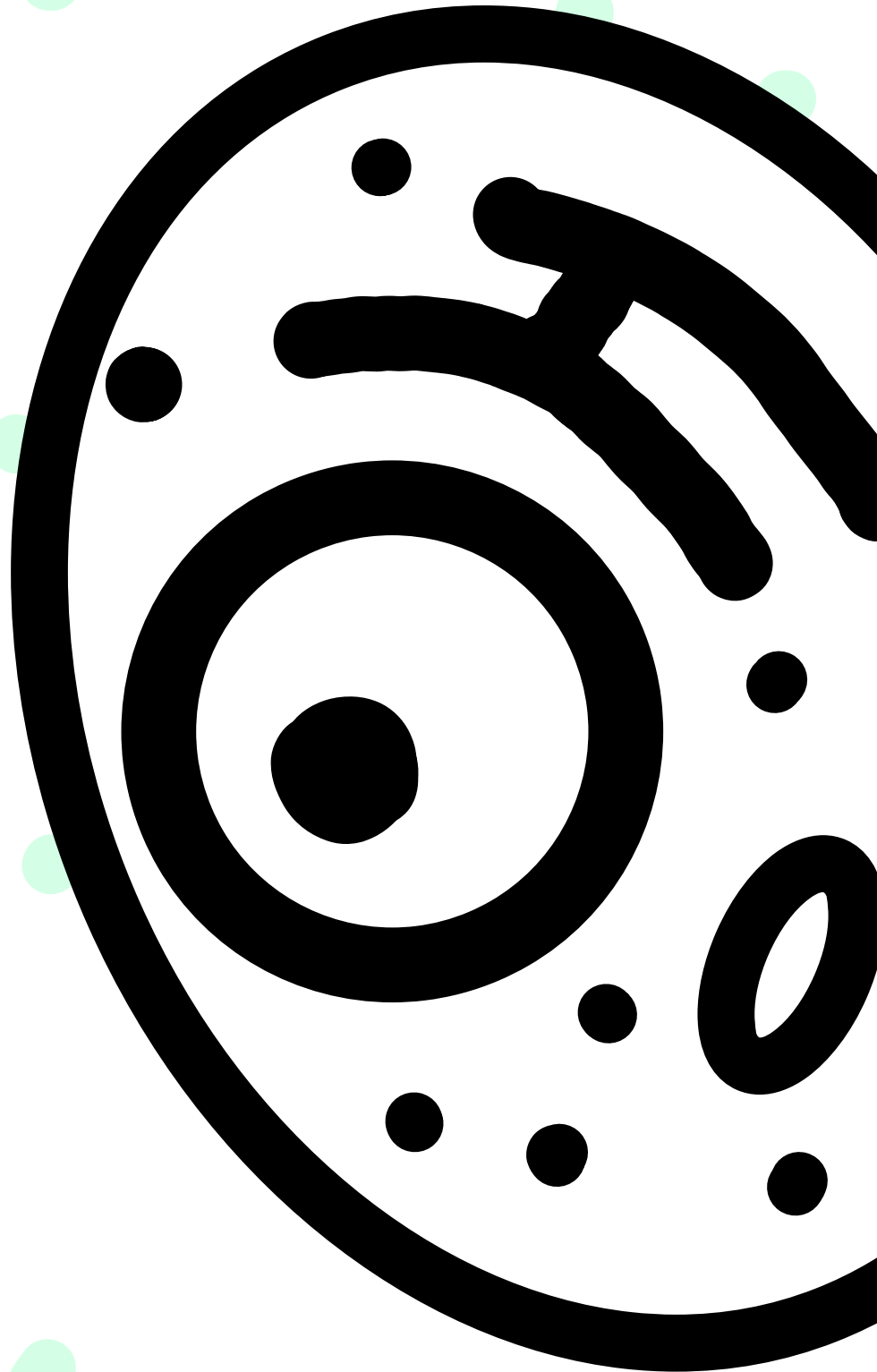
O

G

Í

A

CELULAR



PRÁCTICAS

A

N

A

T

O

M

Í

A

A

N

I

M

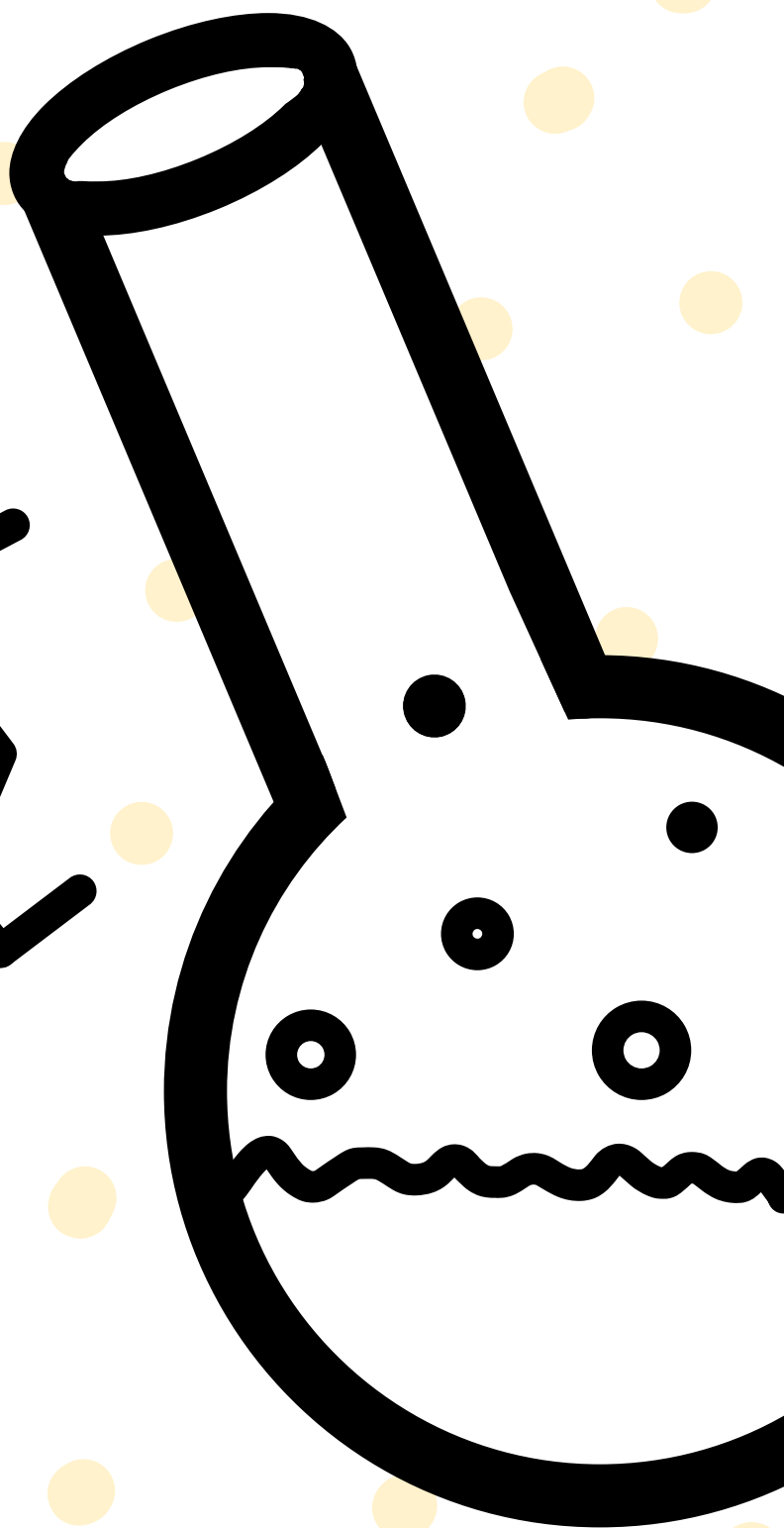
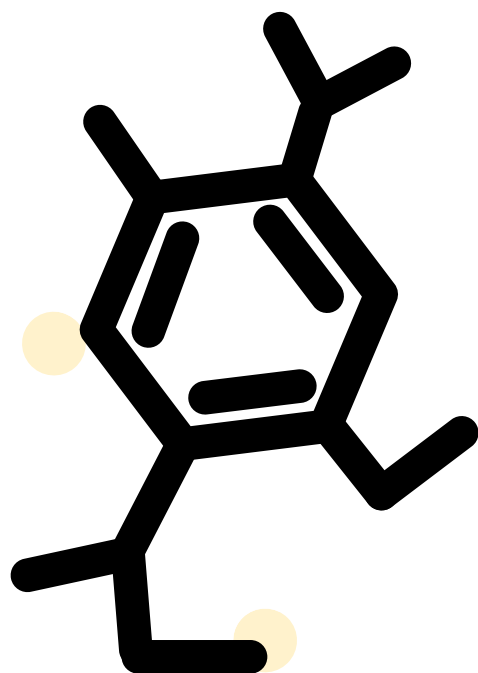
A

L



PRÁCTICAS

B
O
O
Q
U
M
C
I
A



TEORÍA 2º CUATRI

B

O

U

M

C

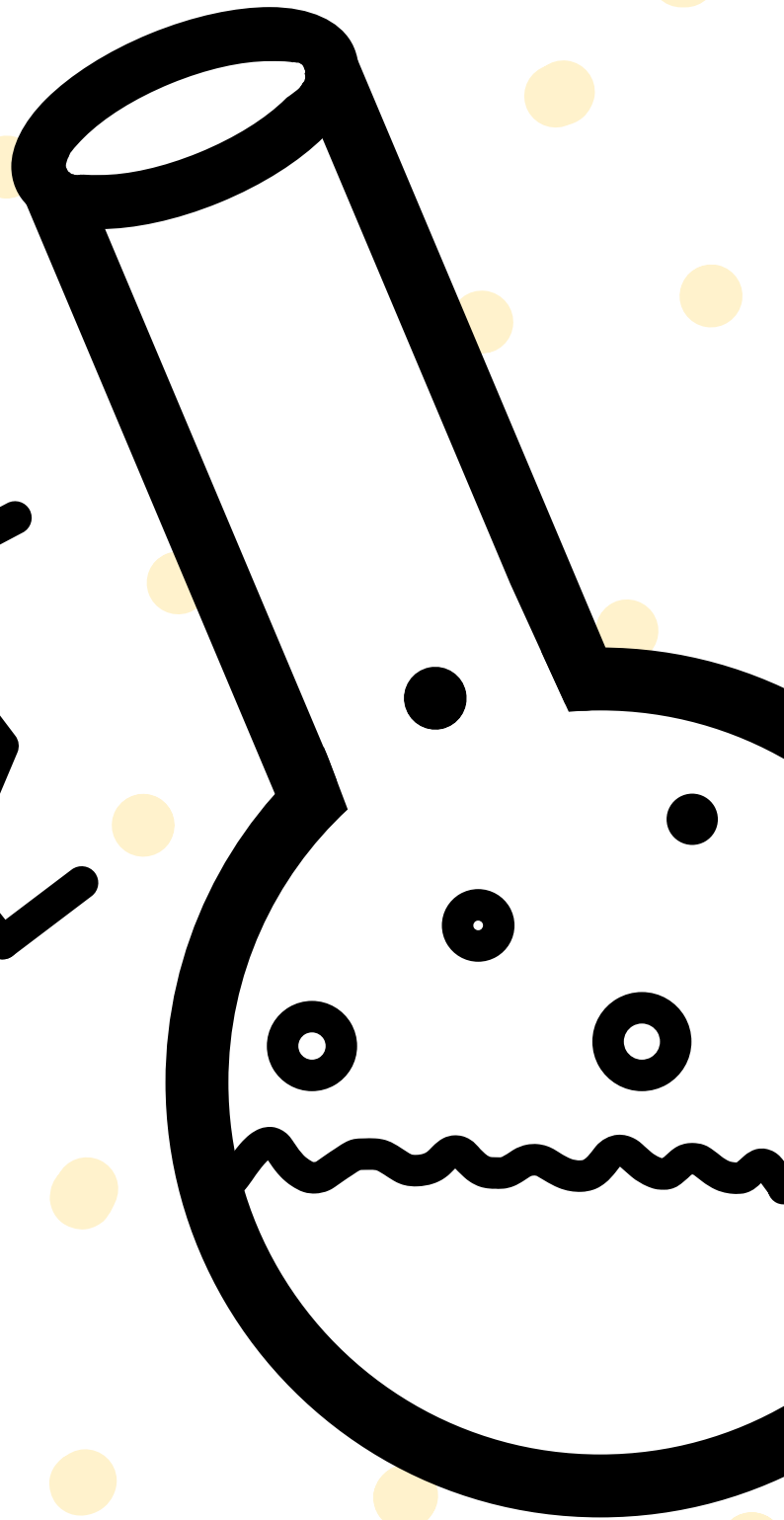
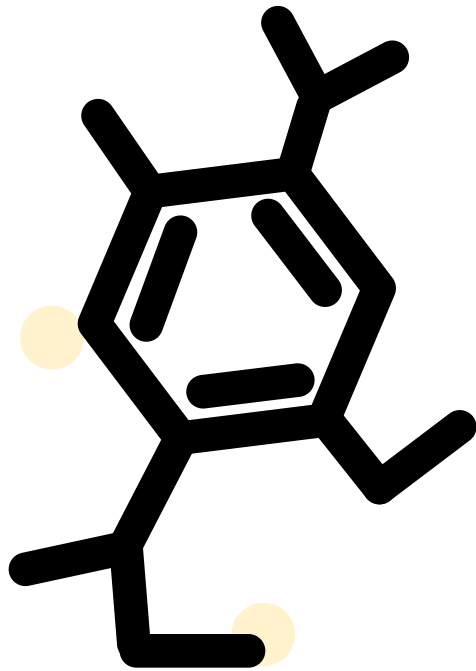
I

Q

Í

I

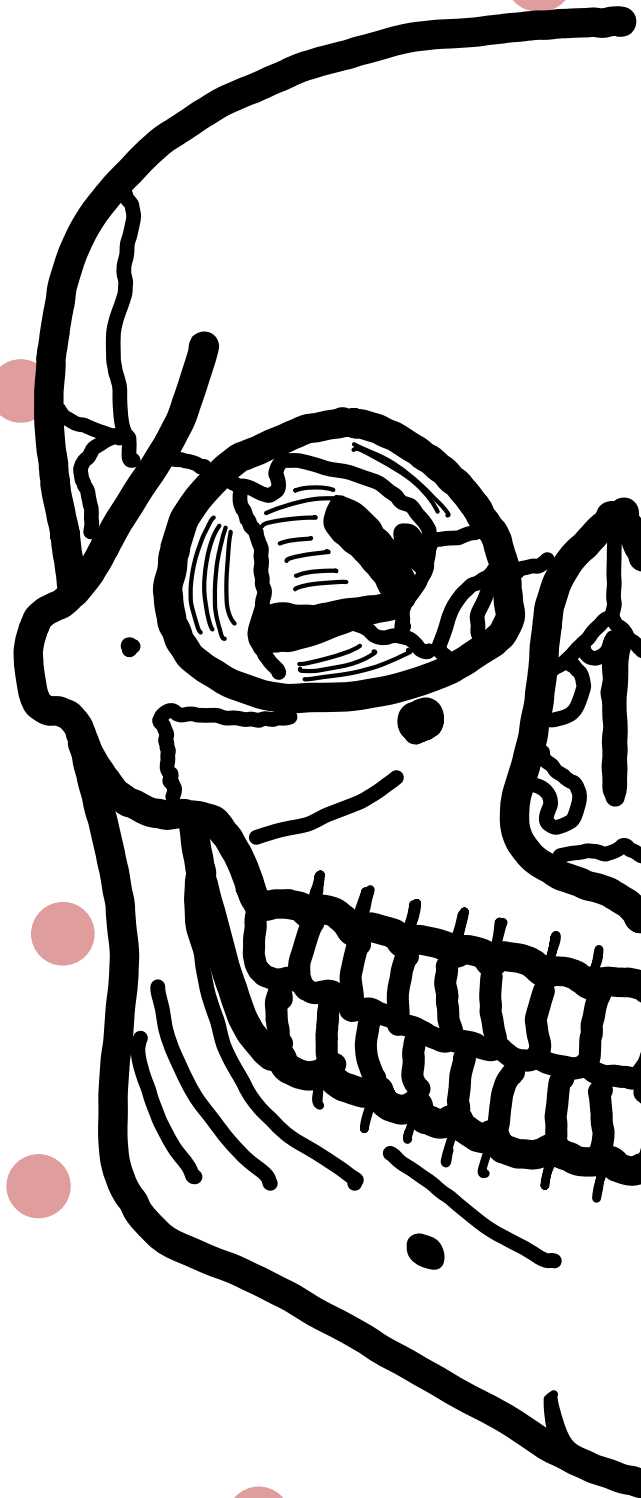
A



PRÁCTICAS

A
N
A
T
O
M
Í
A

H
U
M
A
N
A



TEORÍA

A

N

A

T

O

M

Í

A

H

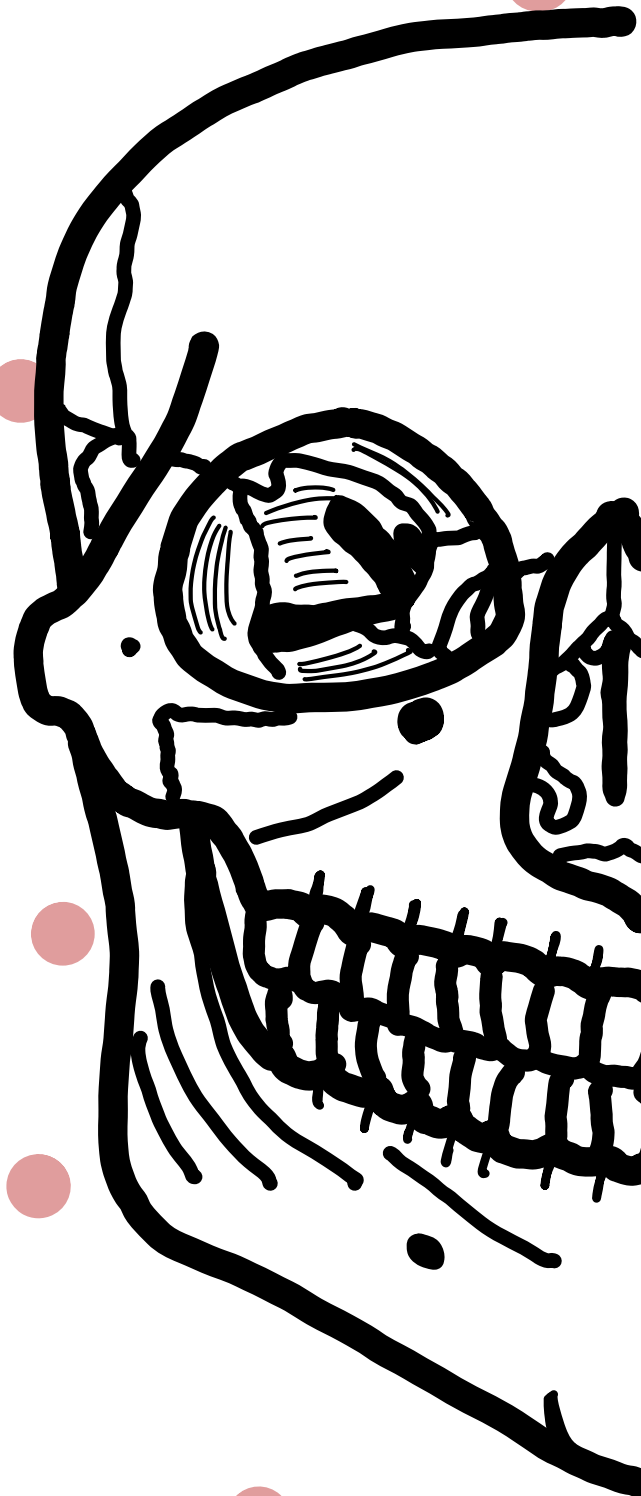
U

M

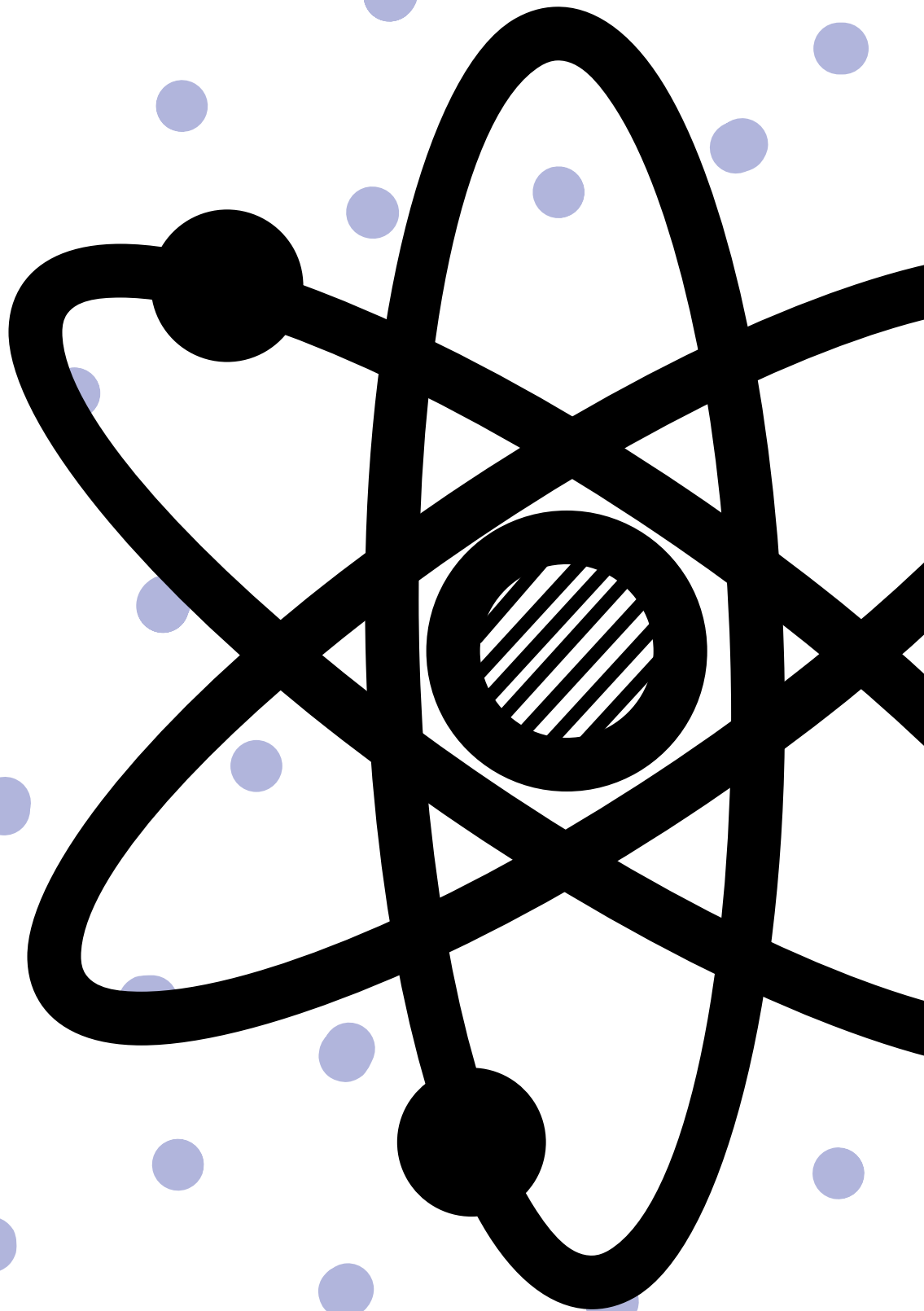
A

N

A



PRÁCTICAS



F

í

S

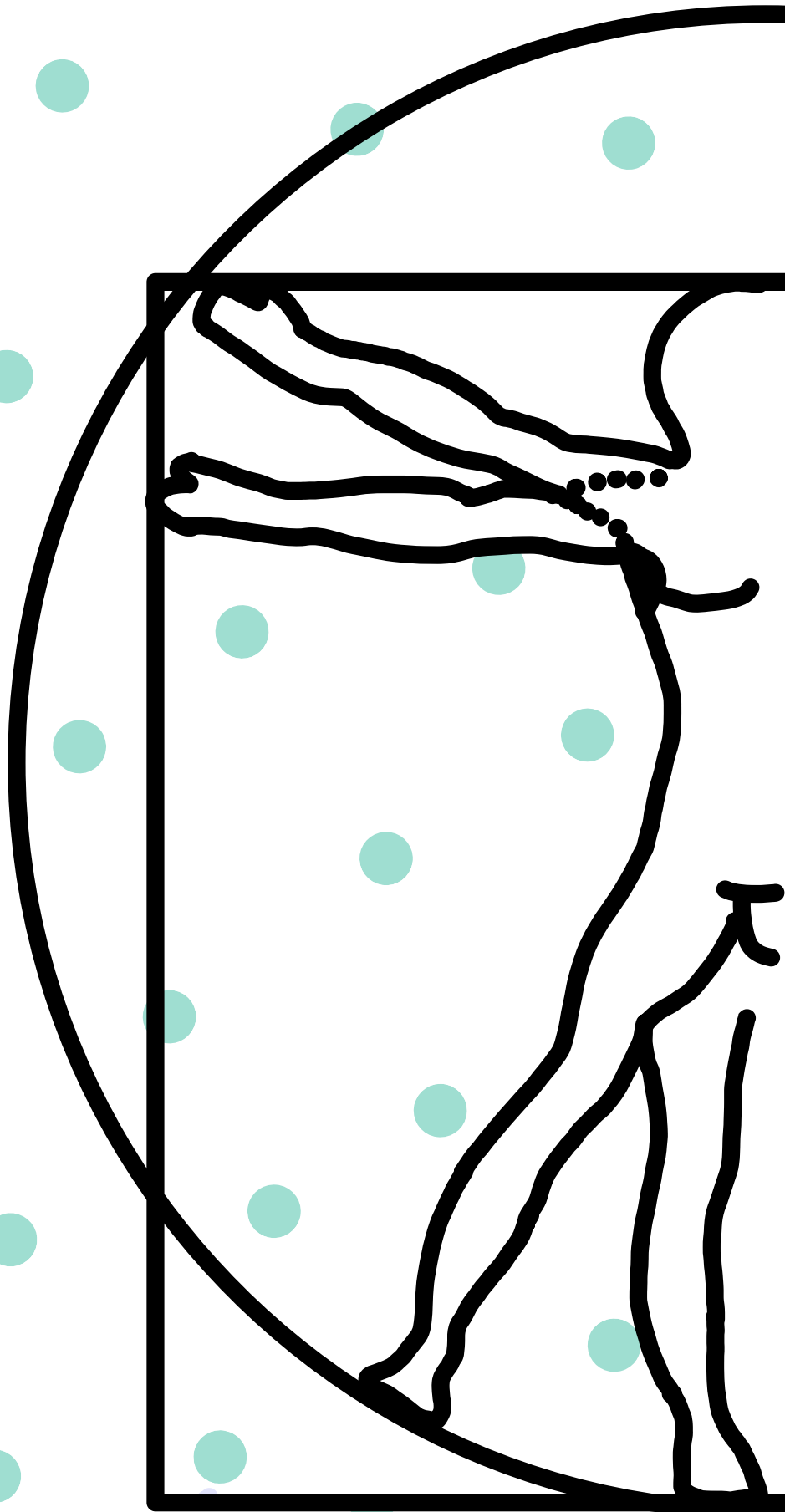
I

C

A

PRÁCTICAS

MÉTODOS
EFIGIOLÓGICA



TEORÍA

H

I

S

T

O

L

O

G

í

A

